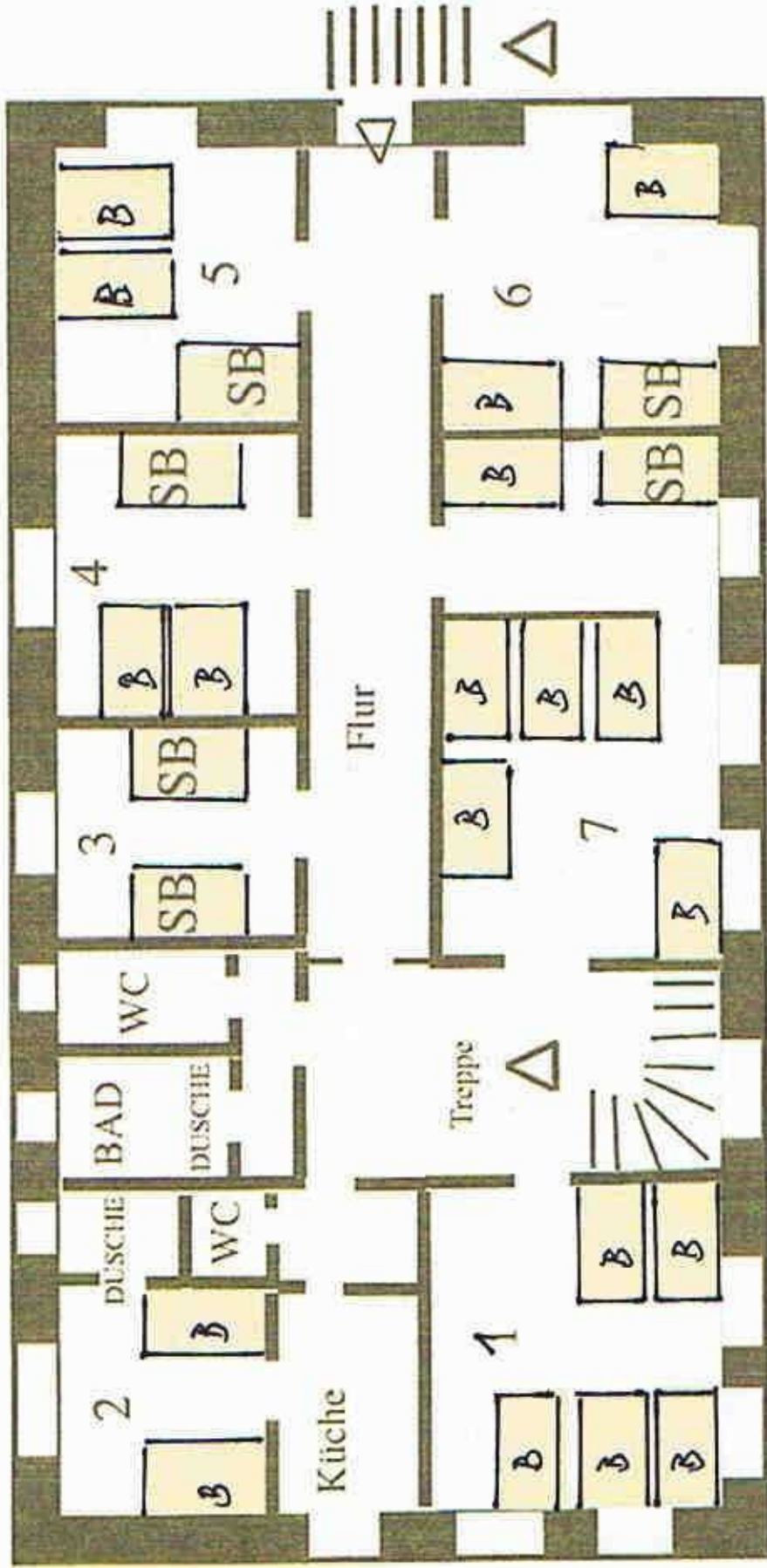


Zimmerplan Alte Mühle Oberkemmathen 1. Stock



- 5 = ~~Zimmer~~ 2 Betten, 1 Stockbett (4 Personen) **SATURN**
- 6 = ~~Zimmer~~ 2 Betten, 1 Stockbett (4 Personen) **JUPITER**
- 7 = ~~Zimmer~~ 6 Betten, 1 Stockbett (8 Personen) **MARS**
- SB = Stockbett
- B = Bett

- 1 = Sonnenzimmer 5 Betten
- 2 = ~~Zimmer~~ 2 Betten **VENUS**
- 3 = Merkurzimmer 2 Stockbetten (4 Personen)
- 4 = ~~Zimmer~~ 2 Betten, 1 Stockbett (4 Personen) **MOND**